

SG52 Curtain Walling System



The SG52 is a structurally bonded, toggle glazed and thermally broken system which enables specifiers to create impressive, continual expanses of glass.

This system has been tested to CWCT Sequence B and has been designed to be fully integrated with AluK window, doors and brise soleil systems to provide a complete façade solution.

DESIGN FEATURES

- › Structurally bonded finish to minimise external sightlines
- › 52mm high rise curtain walling system
- › Fully integrated vent options including POV, casement window
- › Large range of box sizes to optimise small to large spans of glazing

OPTIONS

- › Glazing and infill range from 32mm - 40mm as standard
- › Fully integrates with AluK window and door ranges
- › Available in a range of polyester powder coating and anodised finishes

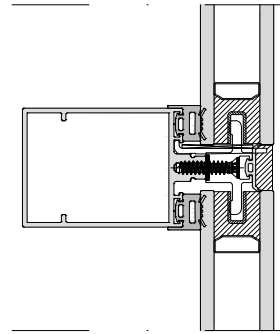
SPECIFICATIONS

Performance and accreditations	SG52
Air Permeability	600Pa
Water Tightness	Static 1500Pa, Dynamic 600Pa
Wind Resistance	2400Pa
Wind Resistance Safety	3600Pa
CWCT Certified	Sequence B
System	
Width	52mm
Depth	50-200mm
Inserted window and door configurations	
Top Hung	Concealed & Framed
Side Hung	Concealed & Framed
Parallel Opening Window	Concealed & Framed
Single Door	Swinging & Sliding
Double Doors	Swinging & Sliding
Weight limits	
Top Hung Max. Weight	180kg
Side Hung Max. Weight	55kg
Parallel Opening Window Max. Weight	200kg
Single Door Max. Weight	160kg
Glazing	
Glazing Options	Silicone Front Seal
Glazing Thickness	32mm - 40mm
Design	
Drainage	Mullion
Dry Glazed Option	✓
Sloped	×

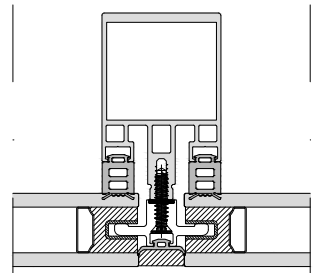
CAD CROSS SECTIONS AND THERMAL PROFILE

Additional details are available on request.

➤ SG52 TRANSOM



➤ SG52 MULLION



➤ SG52 THERMAL PROFILE

